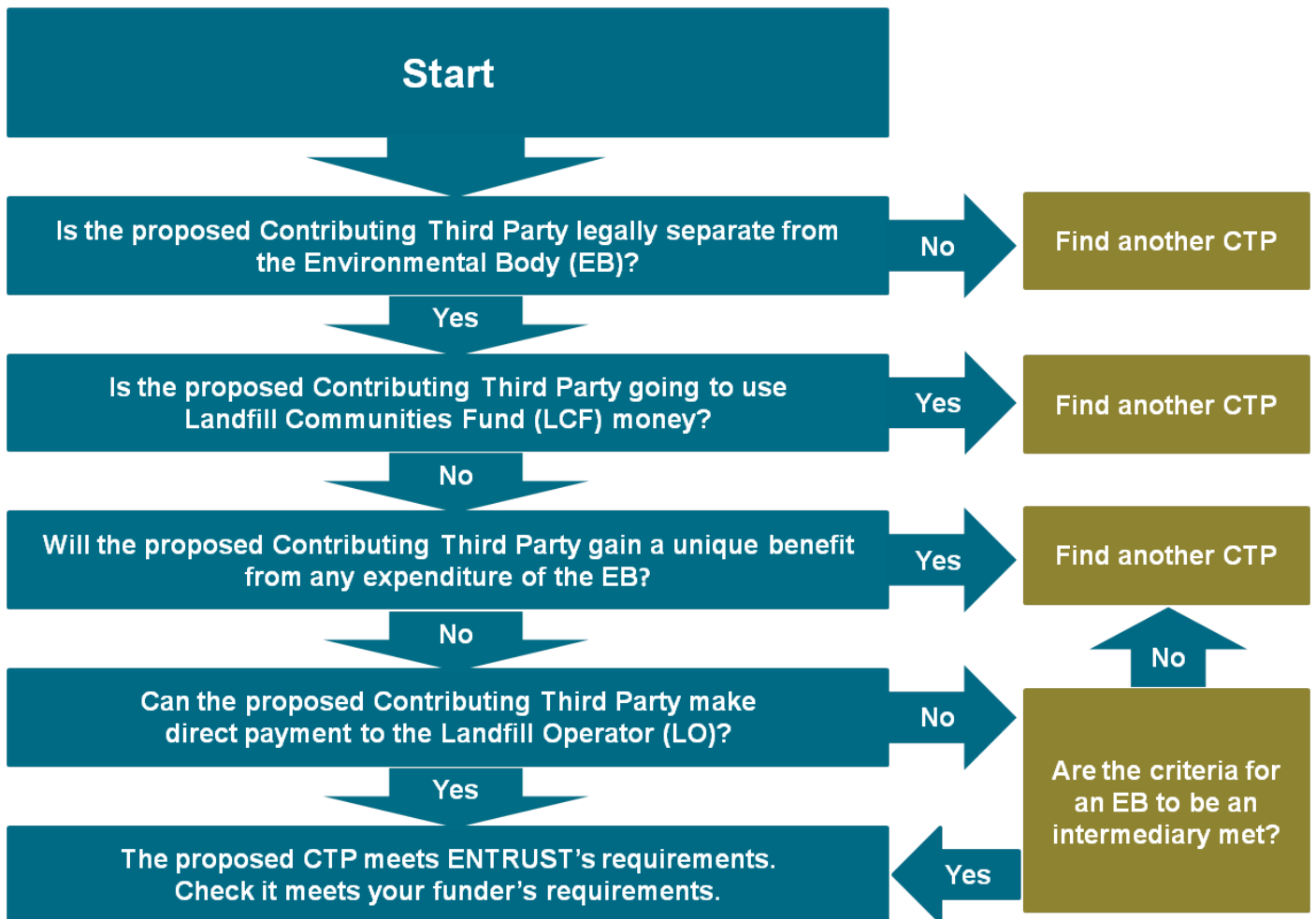




## Contributing Third Party (CTP) decision tree for Environmental Bodies (EBs)

This decision tree should aid you in determining whether a potential CTP meets ENTRUST's requirements. It should be used in conjunction with our [guidance manual](#) and the separate note on CTPs: [Guidance Note: Environmental Bodies and Contributing Third Parties](#).



The criteria for an EB to be an intermediary are:

- the CTP intended the payment to be paid to the LO;
- the payment will be kept apart from the EB's other funds; and
- there will be a clear documented audit trail.